

DRC

PZ22-1200027
07/02/2025

PLANT SCHEDULE

TREES	QTY	COMMON NAME	BOTANICAL NAME	SPECIFICATIONS	CAL/DBH	HEIGHT	SPREAD	NATIVE	XERIC		REMARKS
PS	9	Gumbo Limbo	Bursera simaruba	B & B	3"Cal	16' Ht	5-6'	Yes	High		4' CT
CD	5	Pigeon Plum	Coccoloba diversifolia	B & B	3"Cal	16' Ht	5'	Yes	High		4.5' CT
CE2	6	Silver Button Wood	Conocarpus erectus sericeus	25 gal	2"Cal	12' Ht	3-4'	Yes	Low		
CS	4	Orange Geiger Tree	Cordia sebestena	25 gal	2"Cal	12' Ht	5'	Yes	High		4' CT
LI	11	Crape Myrtle	Lagerstroemia indica 'Muskogee'	25 gal	2"Cal	12' Ht	5'	No	High		4' CT
LL	7	Glossy Privet	Ligustrum lucidum	25 gal	3"Cal	10' Ht	4'-5'	No	High		
QV	35	Southern Live Oak	Quercus virginiana	B & B	4"Cal	16' Ht	5-6'	Yes	High		6' CT
SPR	2	Cabbage Palmetto	Sabal palmetto	B & B		varies	10'	Yes	Medium		
TC	9	Yellow Trumpet Tree	Tabebuia caraiba	B & B	3"Cal	16' Ht	5-6'	No	High		4' CT
TH	7	Pink Tabebuia	Tabebuia heterophylla	FG/B&B	4" Cal.	16' Ht	5-6'	No	High		6' CT

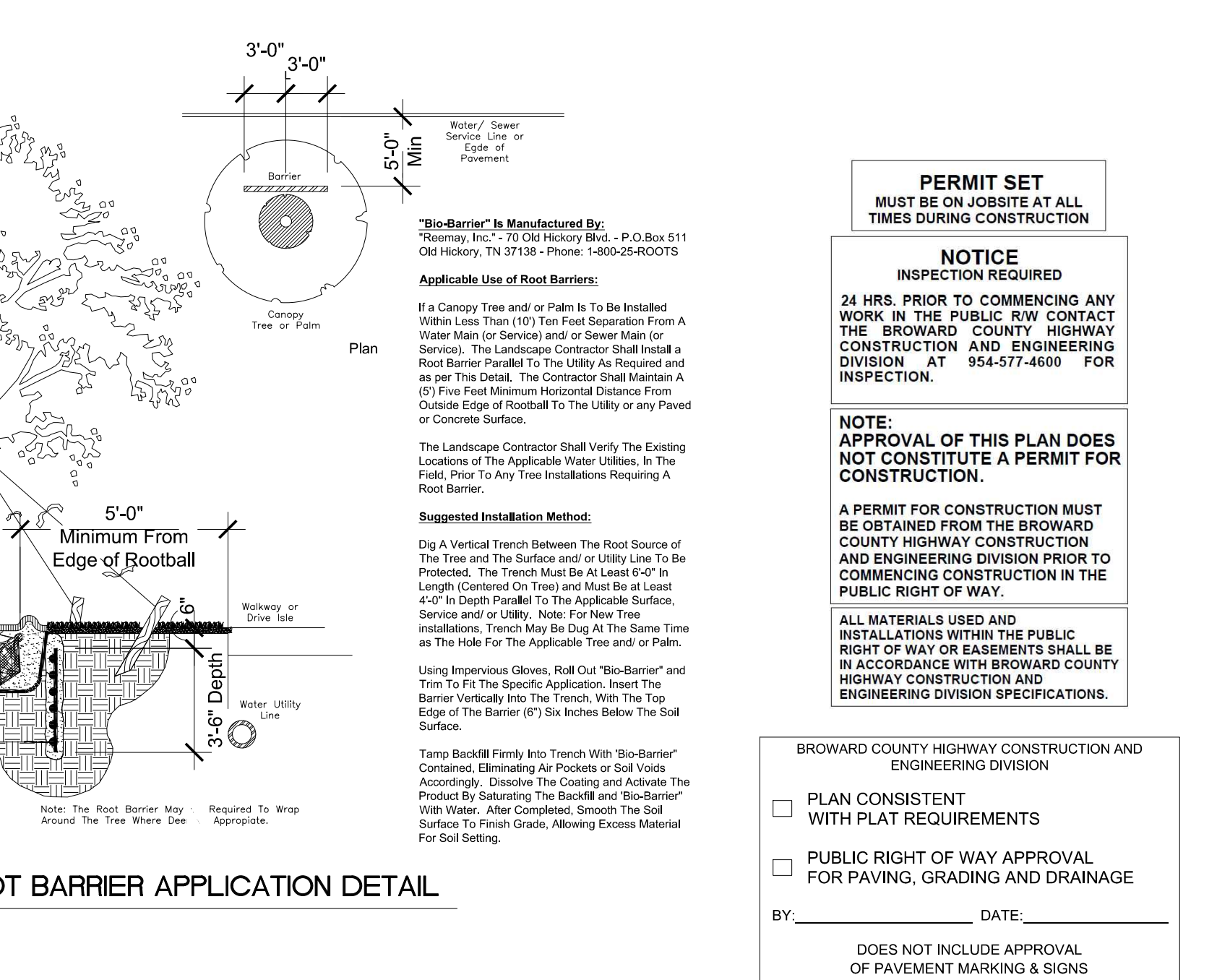
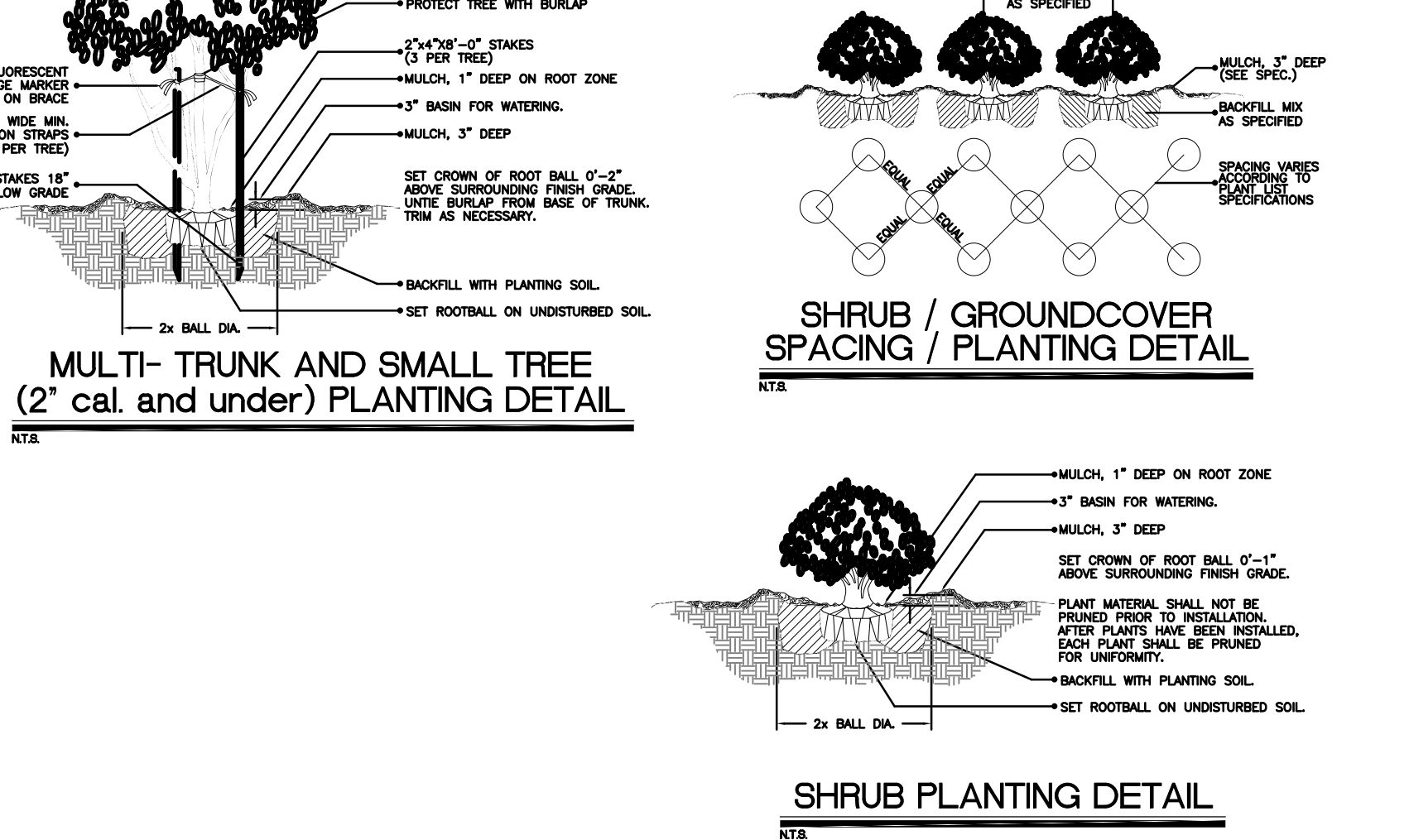
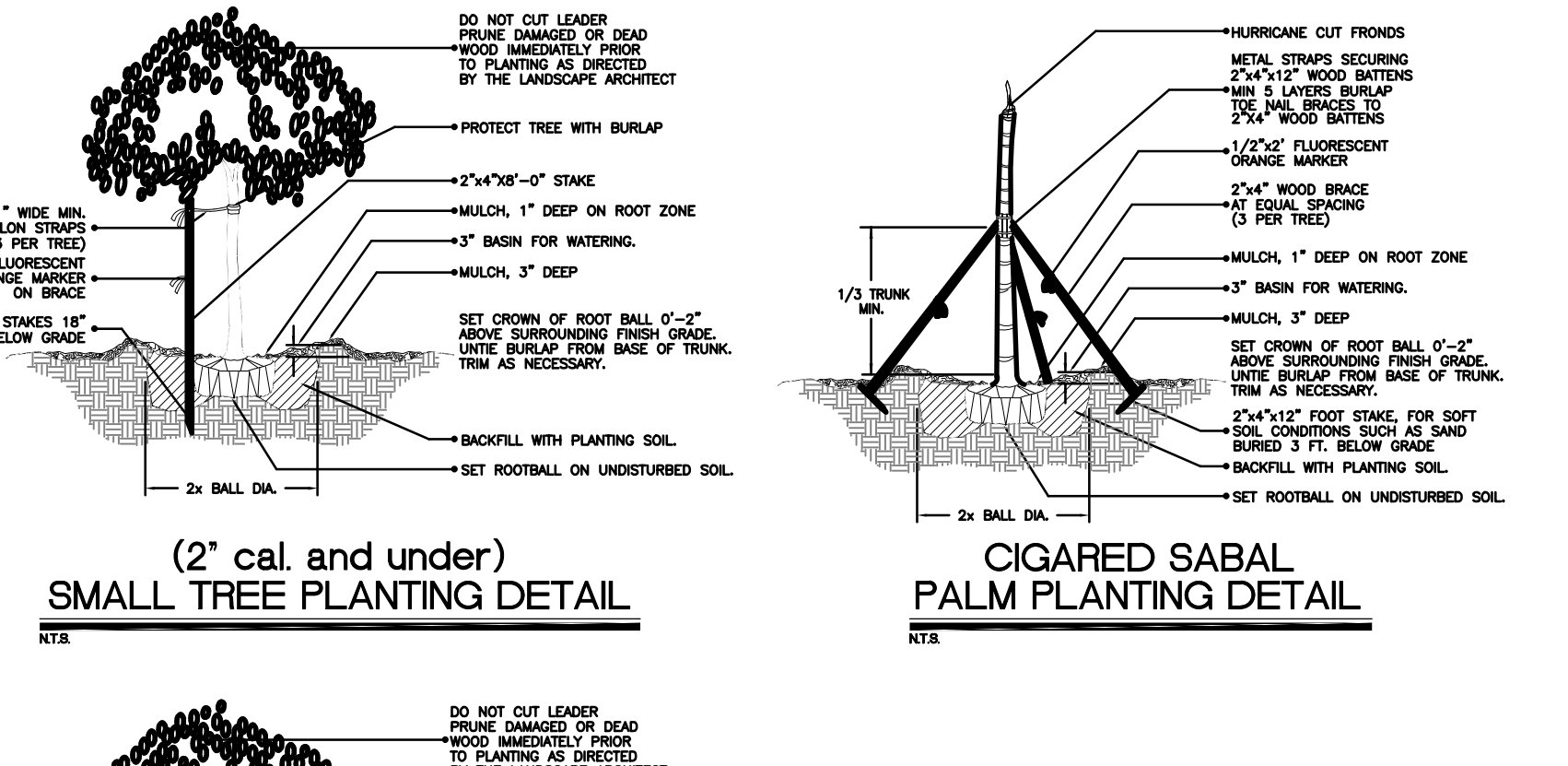
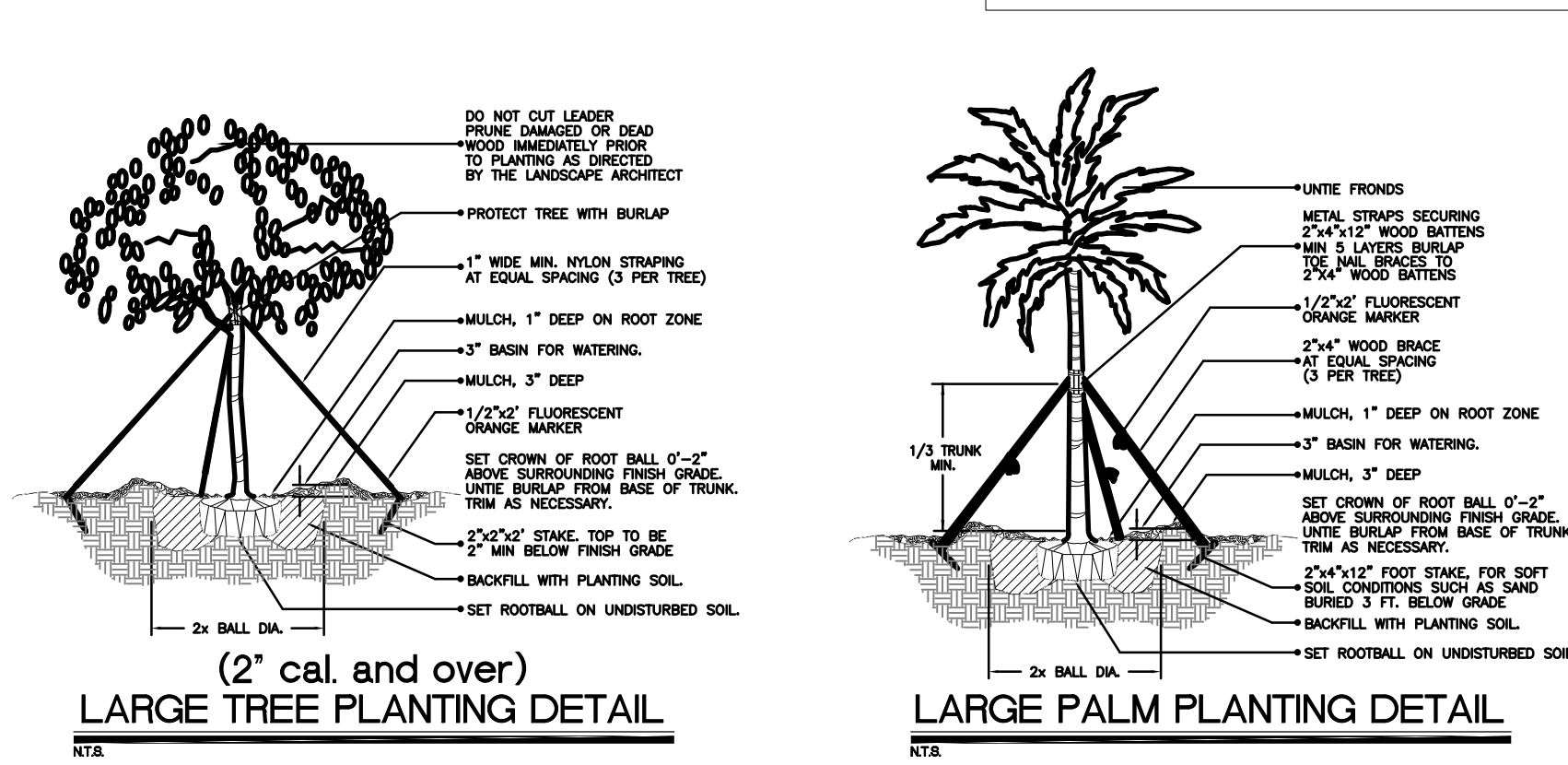
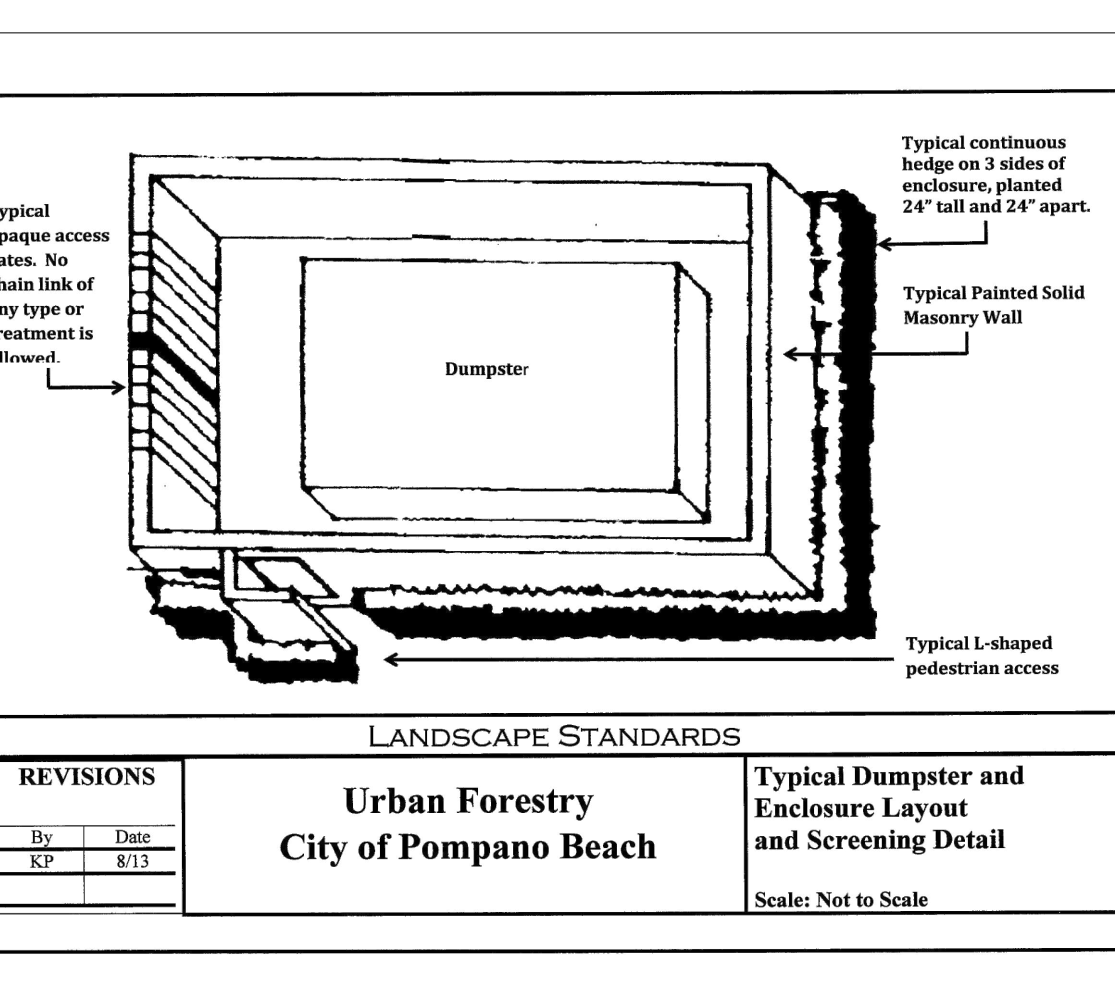
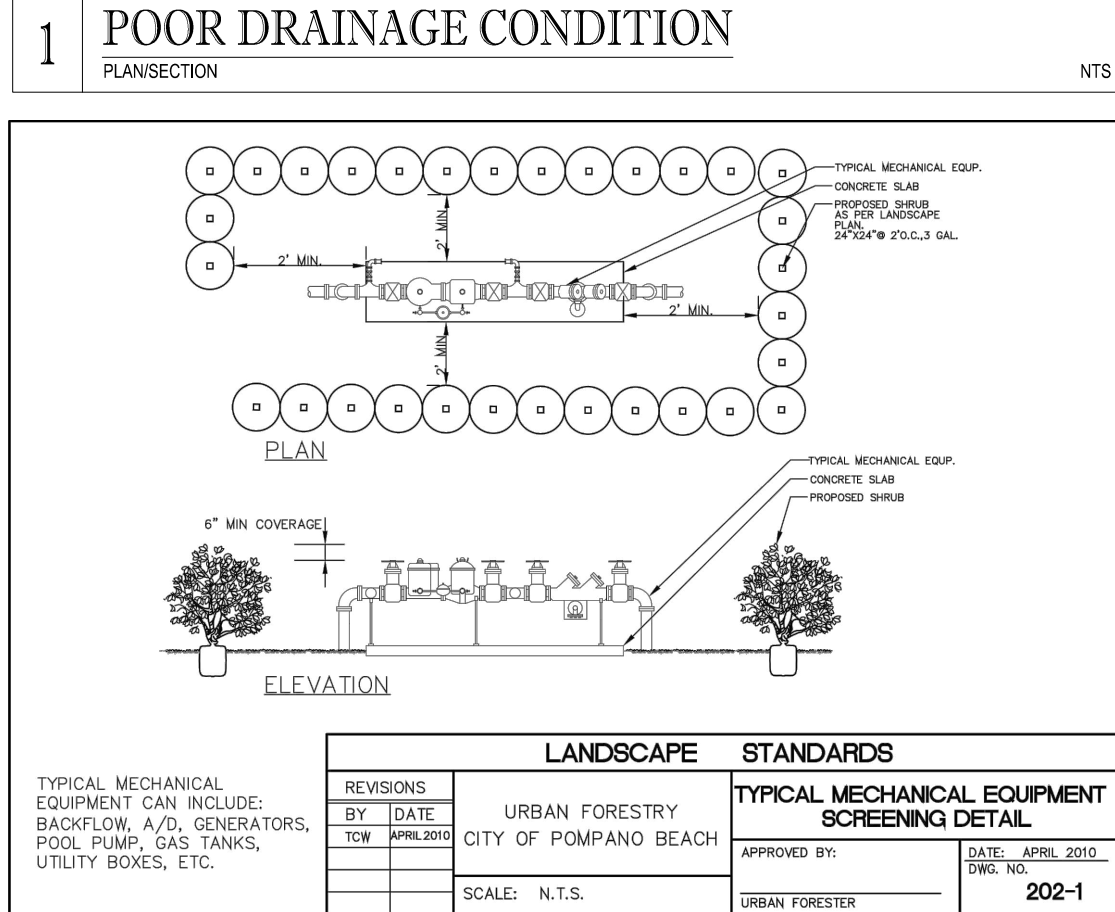
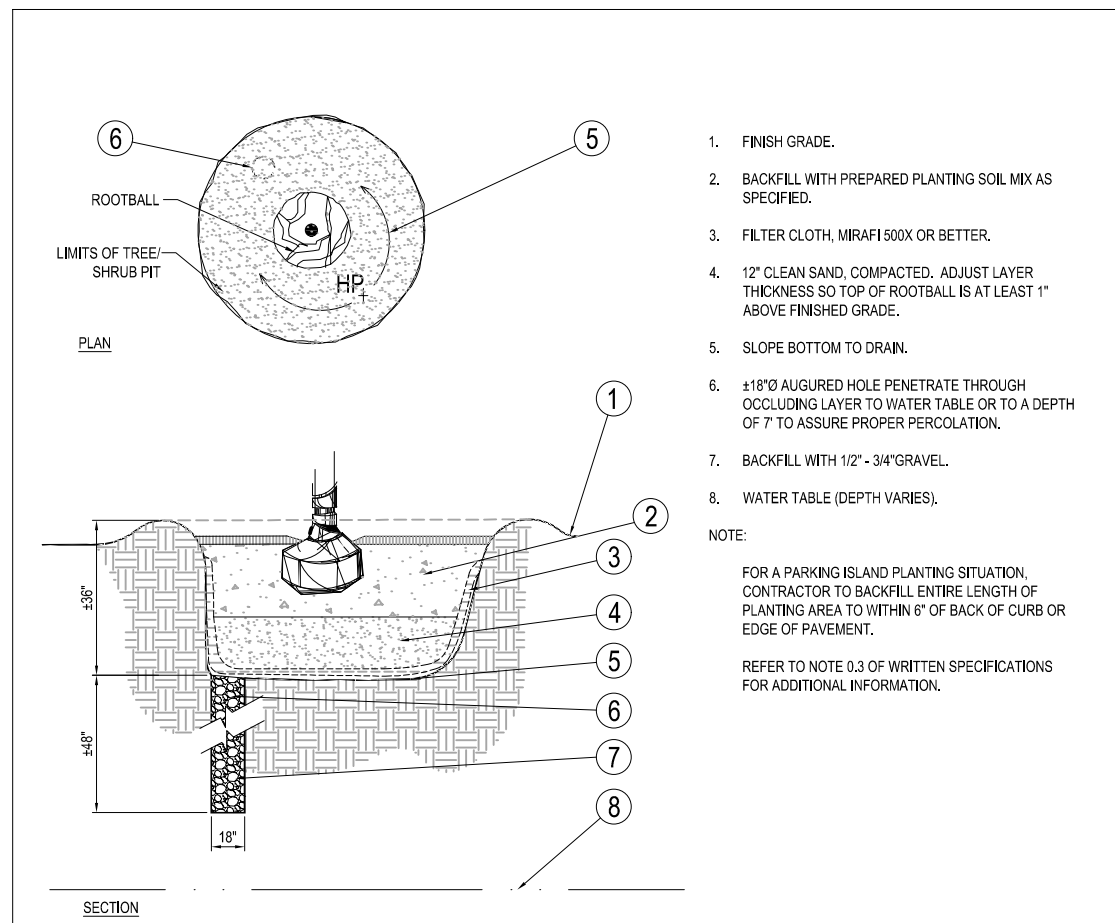
PALM TREES	QTY	COMMON NAME	BOTANICAL NAME	SPECIFICATIONS	CAL/DBH	HEIGHT	SPREAD	NATIVE	XERIC		REMARKS
RE	5	Florida Royal Palm	Roystonea elata	B & B		20-22' gw	18-20'	Yes	High		30-34' oa hts
SP	18	Cabbage Palmetto	Sabal palmetto	B & B		18-22' oa	10'	Yes	High		
VM2	8	Manila Palm 'double'	Veitchia merillii	45 gal		8-10' gw		No	High		double
VM3	6	Montgomery Palm	Veitchia montgomeryana	FG/B&B		18-22' oa	12'	No	High		single trunk

SHRUBS	QTY	COMMON NAME	BOTANICAL NAME	SPECIFICATIONS	SPACING	HEIGHT	SPREAD	NATIVE	XERIC		REMARKS
CH3	389	Red Tip Cocoplum	Chrysobalanus icaco 'Red Tip'	NA	30"	36"	36"	Yes	High		Full to base
CHH	10	Red Tip Cocoplum	Chrysobalanus icaco 'Red Tip'	NA	24"	24"	24"	Yes	High		Full to base
CRI	9	'Queen Emma' Crinum	Crinum augustum 'Queen Emma'	15 gal	As Shown	48"	48"	No	Medium		Full to base
VIA	80	Mirrorleaf Viburnum	Viburnum awabukia	-	42"	72"	36-42"	No	High		full to base
VIB	148	Sandankwa Viburnum	Viburnum suspensum	NA	24"	24"	24"	No	High		Full to base

SHRUB AREAS	QTY	COMMON NAME	BOTANICAL NAME	SPECIFICATIONS	SPACING	HEIGHT	SPREAD	NATIVE	XERIC	SPACING	REMARKS
DUR	399	Sky Flower	Duranta repens 'Dwarf Golden'	n/a	18"	16-18"	16-18"	Yes	High	24" o.c.	Full
HAP	776	Fire Bush	Hamelia patens 'compacta'	-	24"	18-24"	18-24"	Yes	High	24" o.c.	Full to base
JAS	163	Southern Wax Jasmine	Jasminum simplicifolium	-	24"	18"	18"	No	Medium	24" o.c.	Full to base
MUH	77	Pink Muhly Grass	Muhlenbergia capillaris	-	18"	14-16"	14-16"	Yes	High	18" o.c.	
PHX	39	Philodendron	Philodendron x xanadu	-	24"	20"	20"	No	Medium	24" o.c.	
PLU	64	Plumbago	Plumbago auriculata	-	24"	18"	18"	No	Medium	24" o.c.	Soft blue flowers
VO2	81	Walter's Viburnum	Viburnum obovatum	-	18"	18"-24	16-18"	Yes	High	18" o.c.	

GROUND COVERS	QTY	COMMON NAME	BOTANICAL NAME	SPECIFICATIONS	SPACING	HEIGHT	SPREAD	NATIVE	XERIC	SPACING	REMARKS
FIM	227	Green Island Ficus	Ficus microcarpa 'Green Island'	n/a	18"	14-16"	14-16"	No	Medium	18" o.c.	
IVS	111	Dwarf Schillings Holly	Ilex vomitoria 'Schillings Dwarf'	n/a	16"	14-16"	14-16"	Yes	High	18" o.c.	
LAN	350	Gold Mound Lantana	Lantana camara 'Gold Mound'	n/a	18"	12-14' Ht	14-16"	Yes	High	18" o.c.	sterile species
LIR	904	Lily Turf	Liriope muscari	n/a	16"	12-14"	10-12"	No	High	12" o.c.	Full clumps

SOD	QTY	COMMON NAME	BOTANICAL NAME	SPECIFICATIONS	SPACING	HEIGHT	SPREAD	NATIVE	XERIC	SPACING	REMARKS
PAS	92,251 sf	Bahia Grass	Paspalum notatum	n/a				Yes	High		



Michael D Grosswirth
DN: c=US,
ou=THOMAS
ENGINEERING
GROUP LLC,
ou=A01410C000001
720E31831F0000EFA
C, cn=Michael D
Grosswirth
Date: 2022.08.22
09:06:18 -04'00'

DRC

PZ22-1200027
10/5/2022

B.C.H.C.E.D. REF. NO. 200617002

THOMAS
ENGINEERING GROUP
CIVIL ENGINEERS - PROJECT MANAGERS - LAND PLANNING - LANDSCAPE ARCHITECTS
6300 NW 31ST AVENUE
FORT LAUDERDALE, FL 33309
PH: (854) 202-7000
FX: (854) 202-7070
www.ThomasEngineeringGroup.com

811
KNOW WHAT'S BELOW
ALWAYS CALL 811
BEFORE YOU DIG
It's fast. It's free. It's the law.
www.callsunshine.com

BUILDING PERMIT
PROJECT No.: F190044
DRAWN BY: JV
CHECKED BY: MDG
DATE: 05-23-19
CAD I.D.: F190044 - LANDSCAPE
PROJECT: FESTIVAL MARKETPLACE
POMPAHO BEACH, FL
FOR: URBN DESIGN
696 NE 125TH STREET
MORTH MIAMI, FL 33415

THOMAS
ENGINEERING GROUP
6300 NW 31ST AVENUE
FORT LAUDERDALE, FL 33309
PH: (854) 202-7000
FX: (854) 202-7070
www.ThomasEngineeringGroup.com
MICHAEL D. GROSSWIRTH
REGISTERED LANDSCAPE ARCHITECT
August 22, 2022
FLORIDA BUS. REG. NO. 1471
FLORIDA BUS. REG. NO. 27528

SHEET TITLE:
LANDSCAPE
SCHEDULES &
DETAILS
SHEET NUMBER:
L-2.3